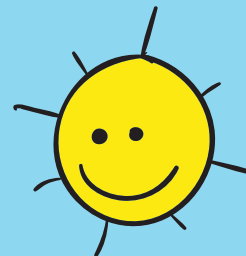




Maxíkova
jazyková školka a jesle



Annual Report

2020–2021



Mateřská škola Maxík – jazyková školka a jesle, s.r.o



Our main goal is to stimulate children to explore new things, to discover their own self-sufficiency and self-realization, self-confidence, mutual respect, and love.

We place great emphasis on teaching humanity, tolerance, and respect for others.

Our language nursery school provides significant help in the educational process as an environment where the development of personality traits begins and can be effectively and beneficially influenced.

Together for 15 years...

Lucie Tuleškov
Associate

Pavel Tuleškov
Executive Director



"I would like to thank the founder who innovates and invests in facilities, equipment, teaching aids, children, and staff.

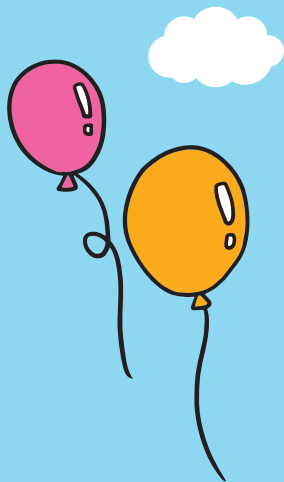
I would also like to thank all of our colleagues for their exemplary discipline, professional attitude, for being able to relate to each other, for their unwavering commitment, and for going above and beyond and coming to work every day with a smile.

Finally, I would like to thank the parents for their help, suggestions, insights, and also for their patience and indulgence and the exemplary attendance at informal meetings and celebrations. We are all very grateful and pleased by your words at these events."

Bc. Monika Javoříková
Headteacher



Table of Contents



Primary Information	6
Nursery School Introduces Itself	9
Maxik's Natural Garden – The Dominant Feature of Our School	13
Educational Activities	17
School Events	27
Term Report	33
Other Collaborations	37
Who and How Does Our School Support?	38
Evaluation	40
Plan for Next Season	42
Management of the School	44
Sidelights on Our School	46



Primary Information



Founder:

Registered Office:

ID No.:

Tax ID:

Name of the School:

Address of the School:

Executive Director:

Headteacher:

Report prepared by:

Annual Report Confirmed:

Organization ID:

School Capacity:

Number of Classrooms:

Phone:

E-mail Address:

Websites:

Mateřská škola Maxík – jazyková škola a jesle, s.r.o.

U Jezera 34, Prague 13

041 94 896

CZ 041 94 896

Maxikova jazyková školka a jesle

U Jezera 34, Prague 13

Pavel Tuleškov

Bc. Monika Javoříková

Pavel Tuleškov / Monika Javoříková

13. 12. 2021

691 011 079

45

4

776 22 44 55

reditel@maxikovaskolka.cz

www.jazykova-skolka.cz





NurSery School Introduces Itself,

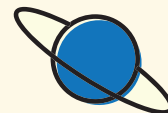
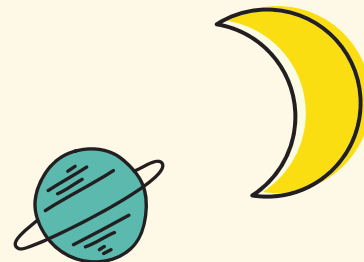
or We Are a Modern Sports and Language School

We are an international nursery school. The functional area of the school comprises more than 400 m². Complete renovation of the school and the garden was carried out in 2016 (area of 1,000 m²). There is also an indoor heated swimming pool (Juklík) and above-standard equipped gym (Monkey's Gym). The school has 4 classrooms with a total capacity of 45 children.

We are primarily a sports and language nursery school where the language is taught by native speakers (USA). Sports activities are conducted by outside professional teachers. We closely cooperate with the Centrum nadání, founded by Václav Fořík (chairman of the Mensa CR and Children's Mensa). We go on

trips regularly, we organize ski courses and outdoor activities, if the Coronavirus measures allow it.

Unfortunately, last year we could not visit Dům U Agáty (home for the elderly), because it belonged to the at-risk population group due to COVID-19. We were also unable to go to various cultural events; theatre groups and magicians therefore came to us. Our school is unique by its range and quality of services. We emphasize a relaxed atmosphere, calmness, excellent communication, and healthy environment. The school does not accept children with cold or unfinished treatment.





The distribution of children into classes is homogenous. Approximately 50% of children are foreigners or comes from mixed marriages, the other 50% is of Czech nationality. The school allows attendance 5 times a week within the basic opening hours 8 a.m.–5:30 p.m. If necessary, the school is able to provide operation according to the needs of parent.



The work team consist of teaching staff (including native speakers). Other staff members are the food service worker, the assistant and the deputy headteacher. The conditions of operations are set out in the organizational and operational regulations. The set out work contents of the staff are in accordance with the work rules for employees of schools and educational establishments. All the staff members set an example for the children by their behavior, they respect each other and create a pleasant atmosphere with good relationships.



"The educational conditions in the school are of a high standard. The school has beautiful premises, new equipment, friendly and smiling staff. The educational results in the area of children achieving competence in language literacy are above average. The environment rich in communication provides the necessary verbal supports and appropriate imitation model. Children communicate openly and have adequate vocabulary; the oldest children are speak fluently in English in whole sentences, they have no difficulty fluently transitioning from Czech to English. The system of pedagogical diagnostics is set up perfectly."



Each classroom is equipped with high quality desks and chairs, which are located in the educational zone of the specific classroom. Each classroom has didactic aids, children's books in Czech and English. The equipment in each classroom includes a variety of equipment for sports games,e.g. basketball basket, Swedish benches, ping pong table, colorful foam set and a variety of didactic toys and games.



We also use two special rooms for:

(i) (i) art activities (ArtRoom) and (ii) music activities (MusicRoom).

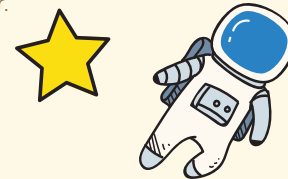
The ArtRoom is equipped with height-adjustable tables, chairs, magnetic wallpaper, a cart for art aids and with ample storage space.

The MusicRoom is equipped with musical instruments for children, flutes, a Petrof upright piano and a color LCD television

Meals are provided by BIONEIA, which delivers quality and varied food in suitable quantities and at a suitable temperature. And above all, it is **ORGANIC**. As a rule, plenty of vegetables, fruits, dairy products, and cereals are available. The current menu is accessible for parents to view (notice board at the school, e-mail...) Of course, there is sufficient water intake; we offer unsweetened children's tea and fresh water. Older children take the

main meal to the table themselves, they clear the table after themselves, use cutlery; the younger ones are encouraged to do the same. At parents' request, we accommodate any food allergies or other dietary preferences within the diet. Upon presentation of a doctor's note and signing a GDPR processing to BIONEIA, the latter can also supply any customized dietary meals. Historically, this has been the case for 4% of children.

Staff are regularly further educated in the form of courses, trainings or seminars. They also participate annually in OSH and FP trainings. All employees are able to provide first aid. The school has annual prescribed inspections and checks. The school subscribes to several periodicals to broaden the knowledge of the staff or for inspiration when working with children. A new feature is the term edition of Maxik's newspaper.







Maxík's Natural Garden³



...the Dominant of Our School

Most of the garden (800 m²) is grassed. The garden is designed to impact the children's sensory perception according to the natural elements. Those are: (i) water, (ii) earth, (iii) fire and (iv) air. These elements are shown in specific zones.

The composition of the vegetation was based on the functional use of the space so that the greenery not only fulfils microclimatic and hygienic function but also aesthetic, psychological, and educational. The existing vegetation consists of coniferous and deciduous shrubs of a lower stature.



WATER



EARTH



FIRE



AIR

³Game elements and impact areas meet the relevant hygiene and safety standards for playground equipment: ČSN EN 1176/2018 — safety standard for playground equipment.



Element **WATER**

it is the sunniest place in the garden. Part of the water segment is a “water game” set consisting of several buckets with sluices and one round container with several outlets. The water flows through a pump which is operated by the children. The pumped water then flows through a water cascade through buckets into the rock pond area. The rock pond is connected to the mist area made of beautiful and high quality acacia cavity.



Element **EARTH**

is manifested in the garden, wilderness, and hideout zones. The garden comprises palisade of sleepers with benches. The palisade is followed by a slight mound as a terrain irregularity; it represents an important contact with the ground for the children. The mound is connected by two logs to a second mound located at the height of 10 cm above ground. Along the fence there is a planting of fruit bushes: raspberry bushes, redcurrants, white currants, blackcurrants and a new addition, gooseberries of two kinds. The bushes are also followed by a bird bathing and drinking area. Behind it there is the children's herb garden (various types of mint, basil, and other herbs). In the corner of the garden there is a composter where biological waste from the garden and kitchen is made into compost. in the outskirts of the wilderness zone, which is adjacent to the garden with smaller trees planted alongside, there is an “Insect Hotel” (shelter for small insects).



Element **FIRE**

a circular fireplace by the palisade of sleepers which forms a semicircle and thus completes the site for festivities and gatherings. The site is connected to a terrace made of larch profile serving as a stage for theatre performances or end-of-school- year parties. The terrace is equipped with mobile children benches with tables for serving snacks or lunches but also for panting or modelling. The terrace is shaded by retractable awning (6 x 3 m).



Element **AIR**

including the zone of movement. The air zone connects the other zones. Between the raised garden bed and a gazebo there is an imaginary monkey track. The imaginary track for skipping and balancing begins and ends with wooden blocks in the ground, with a log in the middle as a beam. Behind the gazebo there is climbing path made of oak wood logs with a rope allowing children to use the uneven terrain to climb up. The garden is also connected by a paved winding pathway ending with turns. The middle part of the paths is on both sides densely planted with willow twigs connected at the top by a natural tunnel. The path serves as a motorcycle and bicycle racing track. There is also a built-in tunnel into the terrain, above which there is a slide. Also, there is a double trapeze of varying heights with a climbing net.



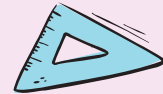
Educational Activities

Educational activities are based on the School Educational Program entitled: *"Hello, children, come here, let's discover the earth together!"*, which was developed in accordance with the Framework Educational Program for Preschool Education. This program is supplemented with a range of attractive activities offered on a regular basis and led by professional outside staff so that the parents are substituted in implementation of these activities.

The children are provided with a full service in the form of quality activities, environment, equipment, and staff managements of the activities.



ABC



English

English language lessons are taught by an experienced and qualified language assistant (USA). The lessons are taught in the form of games, fun, songs, but also as a guided activity or assistance in spontaneous activity. The teacher is present at dressing, hygiene, field trips, at the playground and at the children's free play.

Sports Gymnastics

This activity is carried out in the wonderful Monkey's Gym, which, like the swimming pool, is in the same building. Children participate in this activity once or twice a week and they are divided into four skill groups (maximum of 5 children per an adult). The Monkey's Gyms are tailor-made for children; quality exercise methods and professional approach as well as a fun format of the activities are the basis. The comfortable and modern space is equipped with equipment designed specifically for children: gymnastic beams, bars ladders, trampolines, fun, colorful and soft exercise elements, and a climbing wall.

The lessons include skill activities, agility and speed training, ball and sports games. The teachers place emphasis on respect for proper psychomotor development of children and on their individual dispositions. The environment is non-competitive and positive so that the children enjoy the movement. Exercise is for children of approx. 3 years and above. Our main goal is to shape and strengthen in children a positive attitude towards movement, exercise, and sports in general. After a common warm-up led in a fun way, the children go through the main part of the class – skillfulness with the equipment. The instructor can easily adapt to the different pace of improvement of the skills with children being in small groups. Exercises with tools, which are both fun and challenge for children – balance beam, bars, ladders, Swedish boxes etc. – are a regular part of every class.



Swimming

Once a week we commute with children aged 3 years and above to a wonderful pool with salt water. The pool, as well as the Monkey's Gym, is in the same building as the school. We familiarize the children with the water, relieve their fears, we also teach them to dive, jump into the water, we practice swimming techniques but also strengthen their physical condition; we accustom children to the cold, and teach them how to behave in the water (4 children per an adult).

Horse Riding

or hippotherapy, is a weekly seasonal up to yearly activity. Mr Pišl has been coming to us regularly for 17 years with three of horses of different sizes. Meetings with them take place right in front of the school building and because of the safety (e.g. dogs running loose in the park), the activity takes place around the entire perimeter of the school building and the adjacent pool. The children can pet the horses, learn how to approach the horses safely. Then every child who is

interested (we do not force the children) gets a safety helmet, gets on the horse and rides. The ride takes around 10 minutes. Younger children are secured by the teacher and Mr. Pišl's staff. The ride includes exercises for balance which help to anchor correct sitting and motor skills while horse riding.

Children yoga

is held once every 2 weeks with children yoga instructor. Each class is appropriately linked to the theme of the week, supplemented with new yoga positions and a story. We focus mainly on correct breathing (via breath exercises), on complete muscle strengthening as a prevention against bad posture and bad habits, on calming more lively children and engaging children with poorer motor skills and the more shy ones. The class starts with breathing exercises (deep breathing into the abdominal cavity all the way to the subclavian bone followed by the sun salutation accompanied by a story and a fairy tale incorporating new yoga positions).



Aerobics

Exercises for children where they acquire not only rhythmic and dance skills, but above all they improve their motor skills and hands and feet coordination at the same time. The children master the easy and undemanding sets of steps in short time. The exercise is beneficial for cardiovascular system of children. Last but not least, it is a way of integrating children into a group in a fun and spontaneous way. Children are guided by an excellent instructor Monika Hamouzová. The activity takes place in the school garden depending on the weather.

MaxClever

This activity is conducted by a tutor from Centrum nadání. It is aimed at children of 4 and more years while being divided into two groups according to the age and ability. The activity improves cognitive abilities, imagination, spacial perception, logic, mathematical skills and functional literacy. Children complete a worksheet on a given topic, they play board and

logic games designed for children of their age and at the end an interesting and simple chemistry/physics experiment is performed. This activity is excellent for the development of gifted children⁴.

Creative Activities

This activity takes place once a week under the guidance of the class teacher who appropriately chooses the activity and tools to be used for the activity. The child learns to work different art techniques, use different materials and tools, develop fine motor skills.

⁴In preschool age, the child goes through a period of uneven and jumpy development. It often difficult to recognize an accelerating development in a specific area when identifying the child's aptitude for something. The child showing signs of a talent has to be further supported. The education of children is carried out in a way so that the development of their potential is stimulated, including different types of talents which then can be further nurtured and, if possible, used and cultivated. Our school ensures the implementation of all the specified measures for the support of talents according to individual educational needs of the children.



Music Club

This club takes place once a week. Children learn to breath correctly, talk to each other, listen, recognize rhythm and tone qualities, sing a variety of children's songs. During the class children use Orff instruments. There is a Petrof upright piano, flutes and other musical instruments. It includes appropriately chosen musical examples demonstrated via TV in the MusicRoom (whether those are individual styles– e.g. opera excerpts, or excerpts from works of world-famous masters).

Canistherapy

Once every 3 months Mr. Suk comes to our school with his female dogs, Borůvka and Fidorka, from the breeding station "Psi ze Širokadleka". Mr. Suk provides lectures on dogs for nursery and primary school children. Children can try to command a dog, practice basic communication with the dog, talk to the dog handler on how the world between dogs and men works, how dogs can help people and how to take proper care of dogs.

Children also get to play a few games with with dogs. This activity is intended for children with no age limit.

Reading Grandma

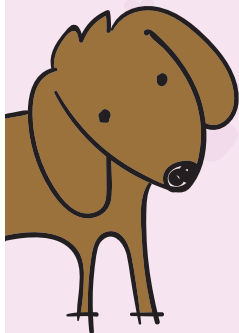
Once a week on Tuesdays at 1:00 p.m., our reading grandmother Maruška comes; unfortunately, this school year she has not been with us much because of government regulations according to which she belongs to the at-risk group. Respect for elders and each other is a natural part of every day and it's something we'd like to pass on to the children, if only because some children are far away from their original homeland and often do not have the opportunity to see their grandparents as much as they would like to. That is also why the "grandma" is a part of our activities. In this case, she represents the activities of intergenerational encounters.



Logopaedics

It takes place every term. A kind and experienced speech therapist Mgr. Pončáková will provide diagnostics. The results are passed on to the parents in a written form and in person; if necessary, we help to arrange the follow-up care.

Haf! Haf!



HandimanBus

The activity takes place once a month and is intended for children of approx. 4 years; during this activity, at 3 stations the children turn into apprentices and craftsmen of different professions. The mobile polytechnic workshop, which introduces children to beauty of the crafts and encourages manual dexterity, is run by professional masters. Children can try their hand at wood work, ceramics, painting, tiling and also bricklaying (building blocks with real mortar and a house according to instructions).

The activity is divided into time sections, one section for one group of children takes 1,5 hours. Children are divided into three groups of about ten. In each section 3 crafts are presented⁵, each lasting 30 minutes and the children take turns at each station. This activity was due to pandemic regulations very limited.

⁵ The following crafts are available: carpenter, tiler, electrician, painter, tailor, bricklayer, welder.



Environmental Education

The goal of the environmental education is to encourage the children to develop a desire to learn about the world around them and to create a deep and lasting relationship with nature. Children have the opportunity to acquire an interest and positive attitude towards all living and non-living things, including themselves. They have the opportunity to learn independently, to think and act creatively and actively and to acquire fundamental information about the environment.

We consider the environmental education to be part of the general contemporary education aimed at protection and creation of the environment. We educate towards protection of the environment, creation of living conditions that do not endanger the nature, wildlife and animals and do not deplete raw material resources. We cultivate skills and habits, form opinions and attitudes, create a hierarchy of values, promote respect for living and non-living nature and the uniqueness of life on Earth.

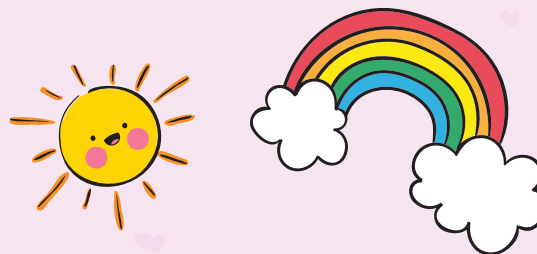
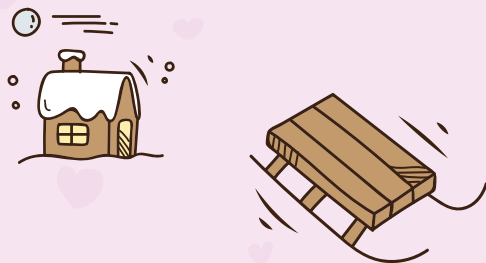
Children Psychologist

Today's times are challenging not only for adults, but also for children. The problems between parents and children are often closely intertwined: a change of environment (moving from abroad, lack of knowledge of the Czech language), disagreements within the family (parents' divorce), health difficulties, loss of employment etc. For a child, such a radical change can mean problems that the child cannot cope with on their own. Securing a professional help is for the child's parents often unrealistic. Experts are scarce. And those few are usually too busy or do not take on new clients. If they do, the waiting period is long (up to six months). Our nursery school has provided this extra service for everyone (i.e. both children and parents) on a regular bases free of charge. In the current school year, however, we have seen each other only sporadically due to maximum health safety of the children.



Ski course MaxSki

Once a year we go to the mountains with children. We choose places where the children can enjoy a private ski slopes and have their own instructors; they also have separate accommodation (without other nursery or primary schools), including extra benefits (swimming pool, sauna, children's corner and a lounge for leisure activities in case of bad weather). Children participate in this activity without their parents. Ratio of children per teacher, including instructors, is 3 children per 1 adult. For the last 3 years we have been going to the Moninec ski resort. We had to cancel this year's trip due to government's regulations issued 2 days prior to our departure.



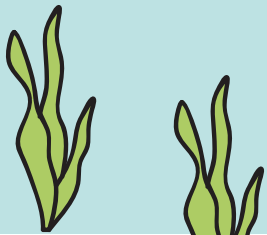
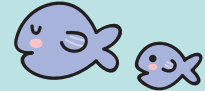
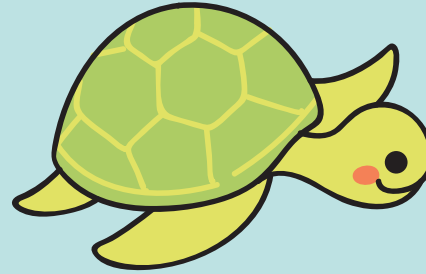
MaxFlower School in Nature

It is an annual one-week stay (without parents) in beautiful nature, in the fresh air at an altitude of 800 m and with a variety of wonderful activities, competitions and trips. We regularly return to Josefův Důl (Peklo Hotel), where the children have superior facilities. The ratio of 5 children per 1 adult guarantees a quality care and great fun! We have not organized the trip this school year due to the small number of participants (concerns about COVID-19).



School Events

- Fun mornings with homework.
- Clown and magician performances.
- Carnival and Halloween parties for children. Theme Sleepovers at the school (e.g. Valentine's Day).
- Celebration of witches and roasting of sausages.
- Regular theatre performances (e.g. On Old Woman Flu).
- Visits from a huntsman, visits of guinea pigs.
- Camping in the nature (school garden), including evening fight games, survival training, shelter building and orientation by stars.
- Environmental programs (e.g. recycling, smoky city, waste, water filtration).
- Railroad morning including games and educational program with the CTU Faculty of Transportation Sciences.



Field Trips:

They have been restricted to within walking distance of the school since spring due to compliance with the COVID-19 pandemic regulations. We therefore went to, for example, swimming pools and spraying fountains in the park,

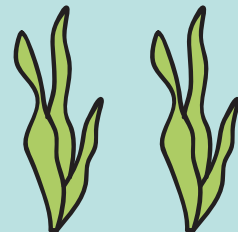
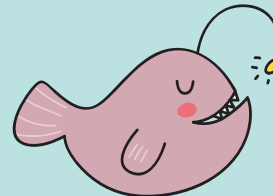
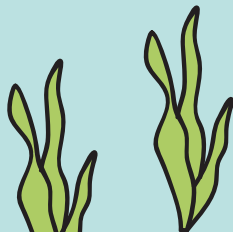
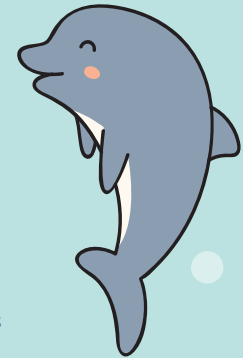
tennis courts Lužiny, basketball courts, football pitches and themed walks in the park and surroundings. Artists came to visit us. However, we managed to visit Jindřišská Tower and a carriage ride on the Old Town Square, an exhibition of nativity scenes in the Bethlehem Chapel, a visit to the Prague ZOO and also a boating training at the Prague-Libeň shipyard.

Events with Parents:

Apple festivals, Halloween pumpkin carving, Christmas performance in the theatre, Easter workshops (cancelled – government regulations), summer party and knighting ceremony of preschoolers.

Other School Events:

Taking photographs of the children, "CR and Neighbours" day, "Human Body and Its Functioning" day, winter Olympics, performance at a retirement home, "Plush Toys Hospital", "Music from Mars", "Journey to Space", "Journey across America".







* Cooperation with Parents

The cooperation with parents is very important and our school puts a great emphasis on intensive and thorough cooperation. Above all, it brings about spending time together, which is emotionally rich. Good relationships foster the partnership reciprocity, which then is reflected in the atmosphere of the school. Parents often know the staff of the school beyond courtesies, they have greater trust in them, they can confide in them about their educational problems and worries and solve them together. The school is fully open to the child's parent and the whole family. Parents can take part in school activities or events, provided they do not disturb with the smooth running of the school.

During the adaptation period, which is generally considered a sensitive event in the lives of parents and a child, professional and sympathetic approach by the pedagogical staff is necessary. Under such circumstances, staffing is oftentimes overstretched. We recommend the parents shorter periods of time but more intensive attendance. The "extra" staff then respond more flexibly to the individual need of the child in the context of the child's inclusion into the group, familiarize the child with the daily regime, rules of the school but also with toys, other children, etc. Before starting the school, we offer an "informal meeting" in the usual operation so that before joining in, the child has the opportunity to walk around the school with parents, get to know the teacher and other children, play in the playroom or the garden.

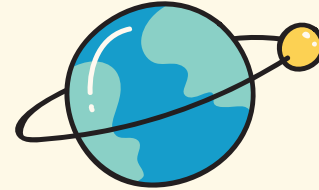
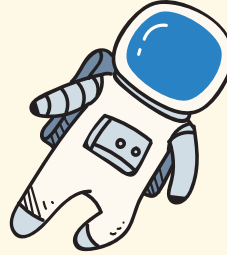
Parents can assist in organization and preparation of school events. They can talk to teachers on a daily basis about the development of their child or other

events affecting their child. Parents are regularly kept up to date and informed about everything important that happens in the school. The necessary information can also be obtained at the school's website, on the notice board and, above all in the sophisticated MaxInfo client system⁶. The children's works are part of the classrooms and school decoration and create a pleasant atmosphere.

Relationships between school staff and other employees are proper. Relationships between children are friendly, minor conflicts and mutual harm are resolved by agreement, older children help the younger ones and protect them. The agreed rules are followed by the children or they warn each other when violation occurs.

⁶ A unique information and attendance system accessible exclusively to parents: photos, videos, newsletters, snack/lunch menus, program, thematic plans and also children's attendance, payment regulations, compensation for absences, authorized pick-up persons, contractual documentation, reports, speech therapy results, etc. It is the software providing a high level of communication and overview of what happens in the school.





Term Report

The term report deserves a separate chapter. We prepare a comprehensive report about the child for parents every term. It regards the children of 3 and more years. Active attendance is a prerequisite in a given term.

The report includes information regarding:

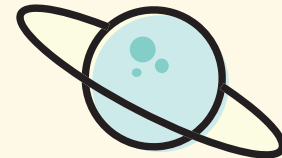
development of social skills: the child is able make contact with peers, manage and follow the rules of a game, work in a group, help the weaker, be considerate, be separated from parents, manage mood swings, self-control and resilience in the face of defeat, respect for authority;

fine motor skills: the child seeks out art activities, masters basic drawing + figure appropriately for their age, uses variety of colors and materials, determined laterality, can imitate simple lines, can hold a pencil correctly, use scissors, string beads, fasten buttons, zippers and laces, can put on shoes, take off shoes, wash hands, use the toilet.

gross motor skills: age appropriate, the child can walk on stairs, jump (with legs together, on one foot and the other + replace a word), handles obstacles and tasks with a ball (throws/catches the ball etc.)³⁴

language skills: the child listens attentively, understands questions, expresses ideas, thoughts, forms word phrases, speaks fluently, is able to form alternate dialogue, (replace passive vocabulary, active, sentence fluency, speech impediments, correct sentence formation, performs multiple instructions, forms complex sentences, retells a text etc.);

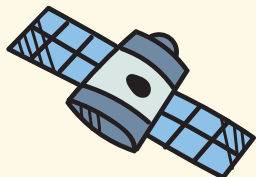
mathematical ideas: whether the child can count on its own, match object when counting, name geometric shapes, identifies first and last, identifies opposites, order elements by size, weight, shape, volume, preschoolers including basic addition and subtraction etc.),



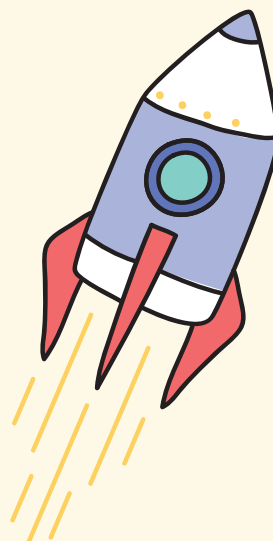


auditory an visual perception: the child understand the daily routine, knows the time and space – distinguishes right and left, concepts of far and near, identifies 4 seasons, days of the week, concepts of yesterday/today/tomorrow, distinguishes basic colors and their shades, identifies differenced in similar shapes as well as in mirror image, recognizes the same shapes, assembles a picture from several parts, identifies the first and last letter in a word, distinguishes between similar sounding words, sounds out the number of syllables, determines the direction from which the sound comes from, the length and softness,

working skills: the child stays on task for at least 10 to 15 minutes, finishes the work, is able to work independently, wait (for its turn etc.). The term report is completed with a verbal evaluation by the class teacher and headteacher of the school. If necessary, the report is written in English language.



The advantage of this comprehensive report is the provision of full information about the child “state of development” and what can be improved. The outcome is usually a meeting with parents and an analysis of the findings, cooperating to improve in particular are or highlighting something where there is potential, talent or aptitude. The parents often use the term report when enrolling the child to primary school.





Other Collaborations

Nursing home Dům U Agáty (Prague – Řeporyje):

Regular visits to the seniors.

Visits of the seniors in the school:

so called "Reading grandpa/grandma" (reading fairy tales, telling stories from their youth, playing chess, painting with the children).

GreenPeace:

We introduce important topics from the field of environmental educations; the school provides accompanying program with adequate games that can help preserved the gained knowledge. The activity takes place 4 times a year.



Who and how does our school support?



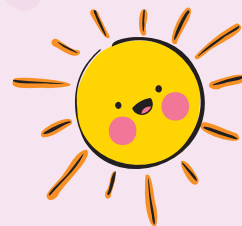
In the past period, we have also focused on areas that do not receive as much public attention and where we feel that we could offer a helping hand.

The following organisations/persons have received support

- from us: Victorian Bushfire Appeal: CZK 8,000
- Transparency International. CZK 10,000
- Amnesty International: CZK 10,000
- To Maxík from the nursery school Maxík: CZK 5,000
- People in Need – Syria/Iraq – medications, clothes, food: CZK 23,000
- Medical clown: CZK 3,000
- Centre Narovinu – food package for children from Kenya: CZK 2,000
- Improving the working conditions of doctors and nurses in the Czech Republic: CZK 3,333
- Centre Narovinu – adoption of two children from Kenya (education, food, health insurance): CZK 79,200
- Arnika – Let's save the river Bečva: CZK 500
- Morskezelvy.cz Hana Svobodová: CZK 23,000
- Memory of Nations: CZK 4,000
- Donio – Libor Seidl, COVID-19 disease victim – 3 children, Pha 6 “Bodlín”: CZK 3,000



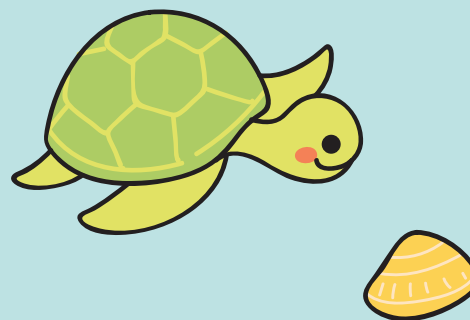
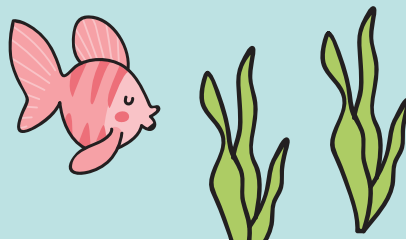
- Let's Give Children a Chance: CZK 20,000
- GreenPeace Rain Forests, Amazon: CZK 10,000
- Help for Amálka: CZK 30,000
- Romea, o.p.s., Mário Herák, future M.D.: CZK 30,000
- The Association for the New Town of Prague: CZK 30,000
- GreenPeace "plast je past": CZK 20,000
- Adéla Holčáková: heart transplantation, 5 years old, public collection: CZK 20,000
- Centre Dialog, o.p.s.: Send the little one to school: CZK 10,000
- Konto Bariéry: 2 times disables son (purchase of an automobile) CZK 10,000



Evaluation

This was the fifth school year of our nursery school on the preschool education market and the fourth school year with accreditation of the MEYS of the Czech Republic. We had the opportunity to confront our ideas about the quality and scope of services provided with the parents and update our offer, get closer to the children's interests and parents' wishes. Given the fact, not counting the departures for primary schools, that only few children left (mainly to state nursery schools), this past year was excellent. The level of increasing quality of care and education can also be seen in the number of older children, or the average age in the school. The average age has been increasing from year to year and we are happy about it.

It is also worth mentioning that we have improved the quality of school services by providing more didactic aids, namely Kangaroo suitcase for CZK 35,000 and at the teachers' requests many good quality children's books and books on didactics. The same applies to the aids for new science club. Our classrooms are equipped with SmartGames building blocks (magnetic, logic games, wooden building block etc.).

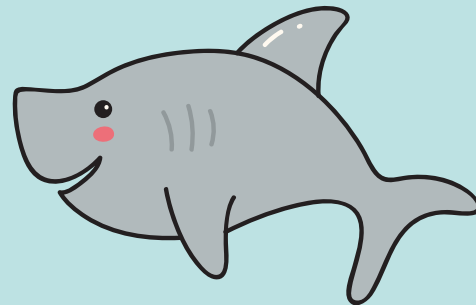


We offer parents the possibility to meet by appointment in the form of an informal meeting. The aim is to familiarize parents with the daily routine, get feedback on what can be improved and also resolve possible disputes arising from insufficient or unclear communication. Another aim is to talk to parents about their child, offer extra care (adaptation of the child, allergies, talent development etc.) We regularly announce free dates for which the parents can sign up. Each child has a portfolio where they keep all their works; parents can look into it and consult the situation at any time.

We organize festivals that are not only for children to have fun, but also for informal chatting with parents, for parents to get to know each other and to integrate foreign language speaking parents. Attendance is high.

Another indisputable plus of our school was the fact that we were able to use the increased school fees to pay for the salary of one more native speaker, which allowed us to strengthen the English section and its teaching.

Courses, seminars and trainings paid for by the employer are actively offered to the staff members. One staff member is in the process of upgrading their qualifications, which the employer supports with provided study leave. For perfect work to be performed, i.e. the children are to be given perfect preschool education, one needs not only a qualified but also a motivated teacher. We have provided more time for preparation and the opportunity for individual work with each child. If we succeed in fulfilling this goal in the future, then the parent will certainly be satisfied.



Plan for the Next Season

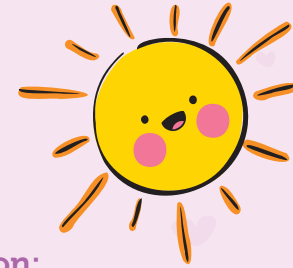
Involving Children in the Garden:

We perceive nature as a great topic to learn about and an important factor in everyone's life. Our aim is to bring children back to their roots and give them and essential understanding of how humans function as a component of the nature. To give them an incentive to explore the laws of nature, its preservation, the fauna and flora. To give children guidance on how to understand the interconnections of species and why we need to care about their preservation.

Cooperation with the aforementioned Social assistance centre at Dlouhá ulice:

In case of positive coronavirus situation, organizing activities with them.





Bronzová Elementary School:

The neighboring primary school. Strengthening the preschool education, involving children in the first grade education of primary school. Preschoolers will have the opportunity to try out a position of a school child.

Traffic Playground:

Use of the adjacent traffic playground.

Individual Education:

It has worked well for us. Especially for children with different mother tongue.

Expansion of the School with New Detached Workplaces:

Kladno, Prague 6 – Petřiny a Prague 9 – Hloubětín.





Management of the School

The budget contribution covered most of the paid wages and statutory payments. Other costs, including rent, energies, maintenance and the purchase of new equipment and toys, were covered by income from school fees.

For the year in question, we were particularly careful to increase the quality of services and the number of clubs, as well as strengthen the English section and the space for individual work. We rewarded the staff within their income and also in the form of benefits. A significant part of the income was reinvested in the development of our school. Due to the current situation regarding the COVID-19 disease, we had to

face new pedagogical practices, especially the “distance education”. Furthermore, we have increased the speed of internet connection for uploading videos for distance teaching (not only for preschoolers), we have set new conditions for the work of teachers and paid considerable compensation amounts to parents who were allowed to keep the children at home, or were afraid of the crisis situation. The COVID-19 disease has badly affected the work with children and the offer of numerous activities outside the school. Since the spring we have lost our reading grandmother (as a part of the at-risk group of population), which the children have borne heavily. Our clubs were also limited (HandimanBus, swimming, others). Therefore, we had to make every effort to cover the cancelled activities with other special program.

A special chapter deserved to be devoted to the European Union funding to support children with different mother tongue and also for the care of children under age of 3. It is appropriate, via this Annual Report, to thank not only the European Union, but also the national institutions which helped us obtain the funds, allocate them correctly and ultimately administer them correctly. Thank you!



Sidelights from Our School

Mrs Teacher: "Why are trees important?"

Children: "Because thanks to them we can breathe."

Mrs Teacher: "Yes, they produce a substance, which is called?"

Children: "Yeah, that is salt!"



Mrs Teacher: "Children, what would you like most?"

A child: "I would like to be invisible so that if I cannot sleep, I can go watch my dad's films."



Mrs Teacher: "Do you know, children, why it rains?"

Children: "Because the god pees on a broken toilet and it leaks on us."

Mrs Teacher: "Children, where do the swallows go?"

Children: "South!"

Children: "To the compost."



Mrs Teacher: "Children, does the cow feed or eat?"

Children: "It does handstands."



Maxíkova

jazyková školka a jesle



www.MaxikovaSkolka.cz